



Manulife Centre Redevelopment Update

May 31, 2017

The \$100 million redevelopment at Manulife Centre will add 35,000 square feet of new retail space. The redevelopment will include a complete overhaul of the exterior of the Centre, as well as a reconfiguration of the interior space. During construction, some of your usual pathways and entrances to the building may also be rerouted.

We will make it a priority to communicate with all our tenants during construction to minimize disruption. Enclosed is a detailed list of construction milestones taking place over the next couple of weeks. Please note: dates and activities are subject to change without notice.

We hope that you are as excited as we are about the changes taking place at Manulife Centre. Please visit manulifecentre.com/redevelopment to view images and ongoing construction updates.

If you have any questions, please do not hesitate to contact us.

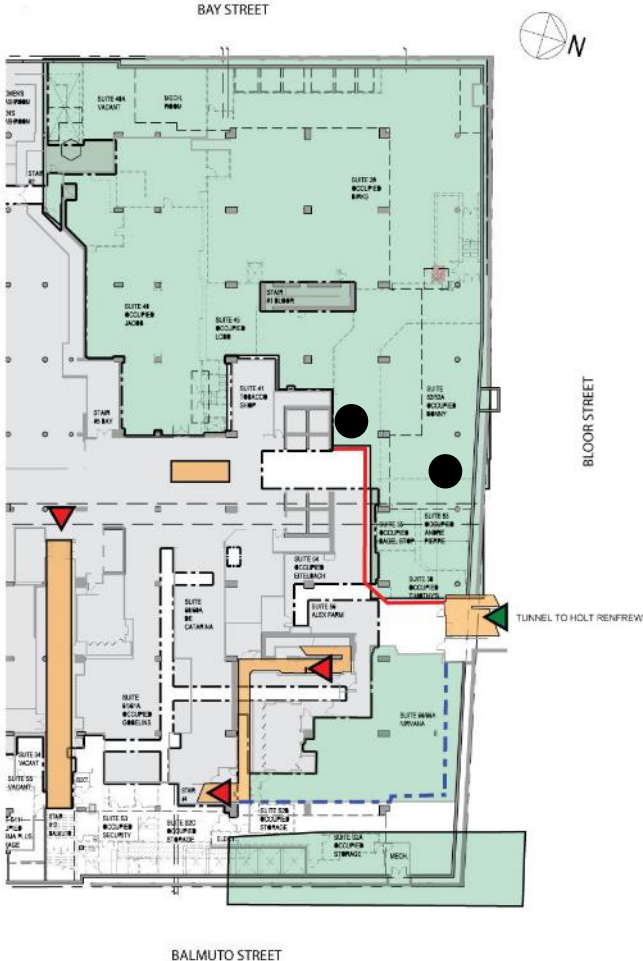
Questions? Contact:

Eva Chapman, Retail Manager T: 416.323.2557 E: Eva_Chapman@manulife.com

Pamela Kalsner, Property Director T: 416.323.2556 E: Pamela_Kalsner@manulife.com



CONCOURSE LEVEL



LEGEND

- Construction Area
- Access/Egress Pathways
- Temporary Tenant Space
- Temporary Overhead Protection
- Direction of Egress
- Direction of Access
- Hoarding Wall
- Weather Wall

Last Updated: May 31, 2017

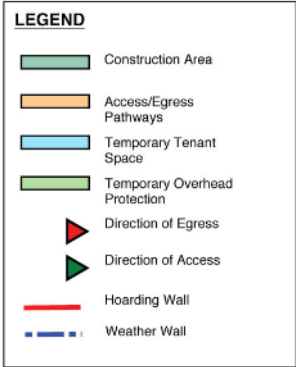
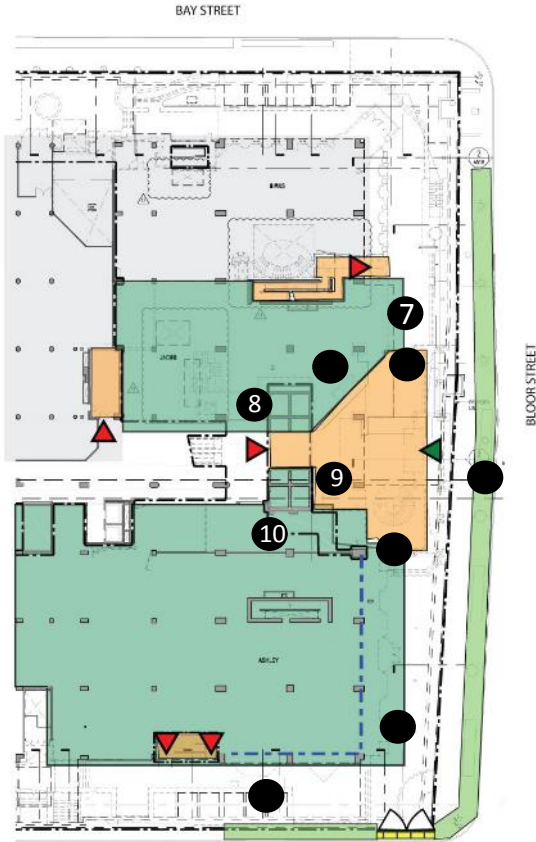
Item	Description	Start Date
001	Interior demolition of former Bagel Stop, Andre Piere, Timothy's, More than Words, Bonny's & mail corridor (low to moderate noise)	May 23, 2017
002	Installing concourse hoarding construction wall	May 23, 2017

Questions? Contact:
 Eva Chapman, Retail Manager T: 416.323.2557 E: Eva_Chapman@manulife.com
 Pamela Kalsner, Property Director T: 416.323.2556 E: Pamela_Kalsner@manulife.com





GROUND LEVEL



Last Updated: May 31, 2017

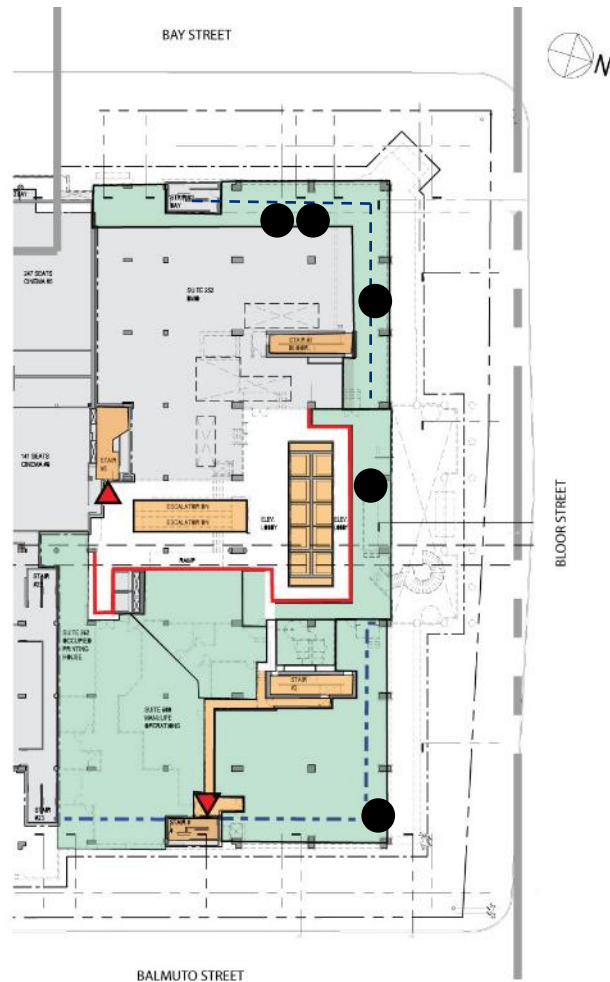
May 31, 2017

Item	Description	Start Date
001	Open covered sidewalk hoarding installed along Bloor Street	May 23, 2017
002	Build temporary entrance in former Jacob's location (low to moderate noise)	May 29, 2017
003	Close atrium staircase	June 2, 2017
004	Install construction wall on Balmuto Street	June 5, 2017
005	William Ashley storefront & façade removal (moderate to loud noise)	June 12, 2017
006	Close Bloor main entrance west revolving door	June 5, 2017
007	Create temporary entrance tunnel from Bloor street to new entrance	June 5, 2017
008	Open new Manulife Centre main entrance through Jacobs	June 12, 2017
009	Install hoarding construction wall to close existing main entrance	June 12, 2017
010	Block wall removed (moderate to loud noise)	June 12, 2017

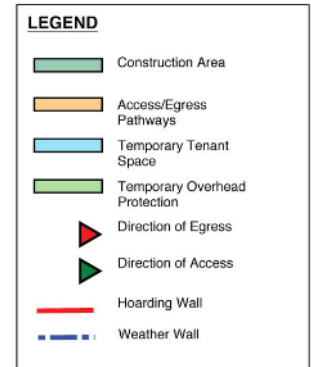
Questions? Contact:

Eva Chapman, Retail Manager T: 416.323.2557 E: Eva_Chapman@manulife.com
 Pamela Kalsner, Property Director T: 416.323.2556 E: Pamela_Kalsner@manulife.com





SECOND LEVEL



Last Updated: May 31, 2017

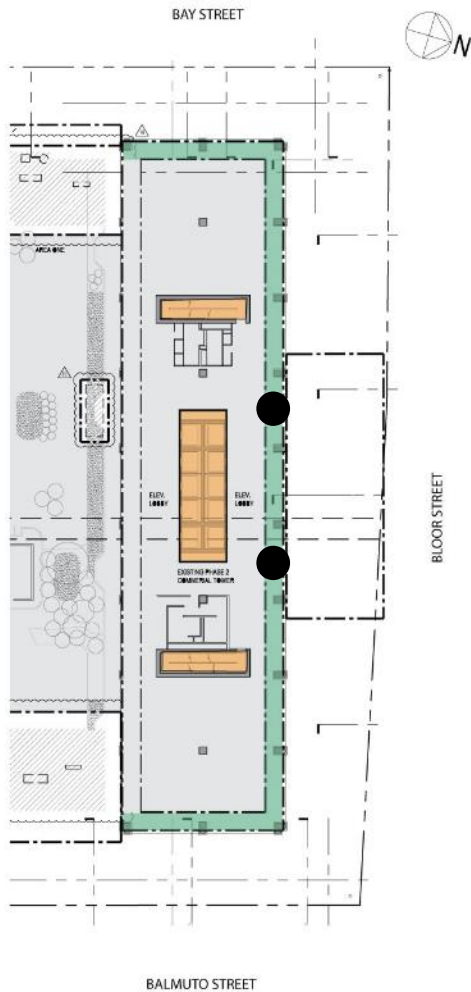
May 31, 2017

Item	Description	Start Date
001	Minor demolition	May 23, 2017
002	Demolition interior – perimeter only	May 29, 2017
003	Hoarding construction wall installed in 2 nd floor lobby, spiral staircase closed	May 29, 2017
004	Build weather wall (hoarding construction wall)	June 5, 2017
005	Removal of exterior building façade	June 12, 2017

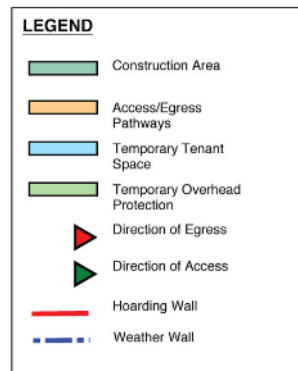
Questions? Contact:

Eva Chapman, Retail Manager T: 416.323.2557 E: Eva_Chapman@manulife.com
 Pamela Kalsner, Property Director T: 416.323.2556 E: Pamela_Kalsner@manulife.com





THIRD LEVEL



Last Updated: May 31, 2017

May 31, 2017

Item	Description	Start Date
001	Set up dust protection	June 5, 2017
002	Minor demolition (low to moderate noise)	June 12, 2017

Questions? Contact:

Eva Chapman, Retail Manager T: 416.323.2557 E: Eva_Chapman@manulife.com
 Pamela Kalsner, Property Director T: 416.323.2556 E: Pamela_Kalsner@manulife.com

