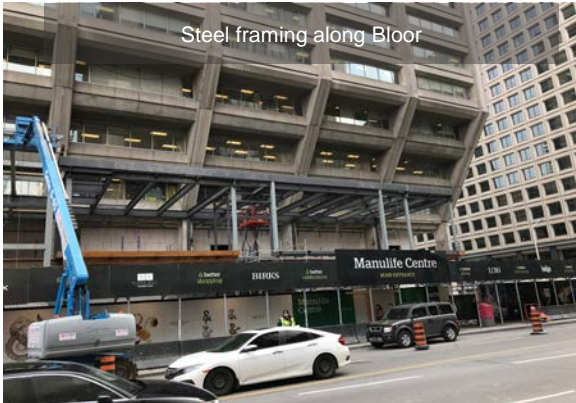




Manulife Centre Redevelopment Update

April 2018



Dear Residents,

It's officially Spring time at Manulife Centre!

In construction news, steel frame installation continues on Bloor and Balmuto, and glass installation will begin soon.

In this summary page, we've highlighted the key construction milestones taking place over the next month. Looking for more details? Please visit concierge in the lobby to receive a full redevelopment update brochure. Please note: dates and activities are subject to change without notice.

During construction, some of your usual pathways and entrances to the building may also be rerouted. We will make it a priority to communicate with all our residents during construction to minimize disruption.

Important Information:

- Glass installation to start at Bloor & Balmuto
- Erection of steel continues on Bloor & Balmuto.
- Work has progressed south on Bay Street (towards Indigo).
- Slab removals continues along Bay, Bloor and Balmuto Streets, noise will be loud.
- Complimentary valet parking services available to tenants.

We thank you for your patience as we continue the redevelopment of Manulife Centre. Please visit manulifecentre.com/redevelopment to view images and ongoing construction updates. If you have any questions, please do not hesitate to contact Michael Motz or Judy Creamer.

Michael Motz

Property Director

T: 416.323.2556

E: Michael_Motz@manulife.com

Judy Creamer

Resident Services Manager

T: 416.323.2573

E: Judy_Creamer@manulife.com